

SUNBEAMS NURSERY

ST ALPHEGE CE INFANT SCHOOL

St Alphege
Values



Love

Loved, Inspired, Shining

Newsletter

Term 2 Week 3 | 18.11.22

CONTACTING THE SCHOOL

Executive Head: Liz Thomas-Friend
Head of School: Jacqui Spinks
School Business Manager: Manda Cullen
Chair of Governors: Paula Trewin
Address: St Alphege CE Infant School
Oxford Street, Whitstable, CT5 1DA
Phone: (01227) 272977
Website: www.st-alphege.kent.sch.uk
e-mail: headteacher@st-alphege.kent.sch.uk
Facebook: www.facebook.com/stalphege
Mrs Spinks School Mobile: 07535013075
Afterschool Club Mobile: 07947555370
Text number: 01227 250106
Online Payment Details:
A/C No 83294856, Sort Code 60-60-08
A/C Name KCC re St Alphege CE Infant School

DATES FOR YOUR DIARY

Nov 2022

Fri 25th – Year 2 bead jar treat – Pyjama party (please send PJs into school in a labelled bag).

Dec 2022

Sat 3rd – Festive Fun day for 2023 Reception

Weds 7th – Year R Christmas Craft Event

Weds 7th – Christmas Lunch

Thurs 8th – Christmas Jumper Day

Fri 9th – Friends Christmas Fair

Mon 12th – Year 2 Nativity 9.30am

Tues 13th – Year R Nativity 9.30am

Weds 14th – Sunbeams Nativity 9.30am

Thurs 15th – Year 1 Christmas Concert 9.30am

Thurs 15th – Year 2 Nativity 2.15pm

Fri 16th – End of Term

[Click here for our School & Nursery Term Dates](#)

KEY EVENTS

Communication

We welcome communication from parents and are always seeking ways to ensure we communicate well with our school community. Please can we remind you that Mrs Cullen's role in school has changed and she is now only working part time at St Alphege. If you need to contact the school office at any time, please email the main office on: office@st-alphege.kent.sch.uk where Mrs Smith, our new Office Manager or Mrs Wratten will be happy to help. Mrs Cullen remains in charge of the school finances, so any invoicing or financial queries relating to the Nursery or our wrap around care can continue to be sent to her directly. You can also contact us via direct message on the School Facebook page. This is a private message and not visible on the page and your response will always come directly from Mrs Spinks. Many thanks.

We are here to help

We are aware of the added challenges facing us all at the current time with the rising cost of living. We are always here to offer advice and support should you ever feel that you need it. There are many different ways that we can help with a variety of different concerns and no problem is too small or too big to manage. If we do not have the ability to support this ourselves, we are also able to signpost families to a range of services or charities that will be well equipped to help. Any information shared with us will be handled in confidence and of course with compassion, so please do not suffer in silence!

Arts Champion's

Our long-standing arts partners, Animate Arts Company, are celebrating their 20th anniversary this year. We are proud of the creative partnership we have built with them and the exciting creative adventures that we have been on together. We are delighted that Animate have once again awarded us as one of their champion schools in recognition of our passion for creativity and the work we have undertaken together. We are proud of the projects and inspirational experiences we have had together in the past and are very much looking forward to more creative adventures together in the future!

Festive Fun Day

We would like to invite all children who are due to start school in Year R in September 2023, to a fun filled festive activity morning on Saturday 3rd December 2022 from 10.00am – 12.00pm. There is no need to book, just come along on the day. Please note that this is not for current St Alphege children. There will be plenty of other festive opportunities for them to enjoy in school.



Friends Christmas Fair: 3.15pm -5pm Friday 9th December

The Friends of St Alphege are delighted to announce that they are currently planning a school Christmas Fair this year. Bring your family along for an afternoon of Christmas shopping and winter treats! If you would like to help with organising this event, run a stall or are a business that could donate a prize for the raffle please contact Pamela at friends@st-alphege.kent.sch.uk

There will also be a Christmas raffle. Christmas raffle tickets will come home with the children next week. Please look out for these. Prizes include; 1 Night stay at Whitstable Fisherman's Hut, 1 hour family photoshoot, 6 sessions with West Beach Fitness and many more. Tickets are priced at 50p a ticket, £2.50 a book.

Worship in Church Term 2

All families are invited to join us for Monday worships at St. Alphege Church, 2.30pm

During worship, if younger brothers and sisters would like to come to the front of Church, they are very welcome to sit with their siblings wherever possible.

- Mon 21st Nov Year 1 and Year 2
- Mon 28th Nov Year 2
- Mon 5th Dec whole school
- Mon 12th Dec whole School

Lost Property

We have quite a few unnamed cardigans and jumpers in school, along with 4 coats. If you think any of these may belong to your child, please check at the school office. If the coats are not collected by the end of next week, they will be donated to the Whitstable Umbrella centre.

Community Events

Poppy Appeal 2022

Thanks to your generosity, we have raised £318.44 for the Poppy Appeal this year.



Online Allergy Awareness and Auto-Injector pens course

Christmas is coming. Excited as some may feel, there is also a huge amount of anxiety. All those christmas gatherings, with food that your child is allergic to!

Join Natalie and I on the 25th November for her parents and carers allergy awareness course. <https://bit.ly/Allergyawareness>

Allergy Awareness

Being a parent of a child with a severe allergy can be quite daunting. Please see the attached poster inviting you to join an online course on 25th November 2022 at 7.00pm You'll learn how to recognise symptoms of allergic reactions, types of reactions, how to administer an auto-injector, tips for daily life and watch-outs for childcare settings, plus caring for your child's mental health and wellbeing too.



Parents & carers of children aged 0-5

- Are you happy with your child's development?
- Are you thinking about children's speech?
- Do you have worries about your child starting school?
- Have you accessed Kent's additional support services and want to share your experiences?
- What is going well and what could be better?

Have your say!

You can have your say in 3 ways:

- Attend virtual workshops on zoom
- Complete an online survey
- Email us directly

Scan the QR code to find out HOW

Kent County Council

Are you happy with your child's development? Please see the attached leaflet for further information

King Alphege Attendance Lion

King Alphege Attendance Lion

King Alphege is awarded to the class with the highest percentage attendance each week.



King Alphege Attendance Lion
W/E 11.11.22
Seagulls Class – 98.7%

Weekly Awards

Whole School Awards

Our awards this year represent our School Development priorities: GROWTH. Each class will nominate a child to receive an award each week.



Great Reading

Archie M – Puffins Class



Risk Taking and Resilience

Maia L-H – Pearls Class



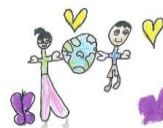
Outstanding Curriculum

Alf - Seagulls Class



Wonderful Writing

Reuben – Pebbles Class



Thriving Community

Percy – Shells Class



Happiness, Wellbeing and Wonder

Kachi – Oysters Class

Weekly Year Group Recap

Sunbeams

From Mrs Keeble & Mrs Humphreys

This week in Sunbeams we have been using collage materials creatively, and in particular paper. We used our fine motor skills to tear the paper into small pieces and then arranged them in a circular pattern and stuck them down. Mrs Memmott brought her keyboard to our music session. She split us up into three groups, each with a different instrument, and we accompanied her playing. We rotated the groups so that we all had the opportunity to play different instruments: quickly, slowly, loudly and softly. We have begun learning some of the songs that we might be singing in our Christmas performance, and learning about the Nativity story. We have also been creating our own stories during our Helicopter Story sessions and acting our stories out together. In our HeartSmart session we thought about the different characteristics we have that make us special.

Year R

From Mrs Arnott & Mr Mead

Reception have had a great week. In English we have been looking at the nursery rhyme Old McDonald. The children made their own animal puppets and on Monday performed their own versions of the song in front of the whole class! We thought about which animals we might find on a farm and did a sorting activity with different animals. On Thursday the children compiled and wrote their own lists of farm animals. We discussed when and why we might use lists. In maths we have been exploring the composition of 1, 2, 3. The children had fun completing different activities to show how 3 is made. This week we have been discovering all about the festival of Diwali. The children created some beautiful Diwali crafts including Diva lamps, Rangoli patterns and firework pictures. We had lots of fun on Friday celebrating Children in Need. We spoke about what charity is and enjoyed lots of Pudsey activities. The Dance Dash in the afternoon was so much fun! Well done Reception, have a lovely weekend!

Year 1

From Mrs Jones & Mrs O'Malley

Well done Year 1 for another great week of learning. The children really impressed us with writing a sequence of statements to re-tell part of 'Little Red Riding Hood' – 'Oh Granny what big ears, eyes and teeth you have!' In Maths we have learnt that when we add, we start with the greater number, and have used number lines to solve addition word problems. In science the children performed a fair test on different materials to see if they were waterproof or absorbent, and in history placed our toys on a timeline. Our oldest toy is called Pandy and is over 80 years old! In RE, we enjoyed a rain free walk through Whitstable town, looking for signs of Christmas, and for Design and Technology, had a go at flying a kite. Next week, we will be learning that a noun is a person, place or thing and will begin to explore subtraction in Maths. Phonics reading books are online – please read every day to help your child build confidence and fluency (passwords are in the front of your child's reading record). Monday is Year 1 Worship in Church: all welcome for a 2.30pm start. Hope you can stay dry over the weekend!

Year 2

From Mrs Swindells & Mrs O'Keeffe

We have had a lovely week in Year 2 and have enjoyed learning all about water pollution and rescuing sea creatures from polluted water. Next week we will be learning about land pollution and the effect it has on our world. We will be creating new, purposeful object from recycled materials. ***Please bring in any junk modelling (plastic, cardboard, toilet tubes etc.)*** to help us with this! In Maths we will be focussing on subtraction and recapping how to find the answer to sums. We will also be learning to subtract 10 from a given number. In English we will be writing a long story based on Greta and the giants. We will build on our story each day and include adjective, verbs, and verbs and the conjunction 'so'. For Science next week, we will be learning all about the importance of healthy eating and classifying foods into foods we should eat a lot of, food we should eat some of and foods we should eat as a treat. On Friday we will have our bead jar treat! Both classes have voted for a film pyjama party. ***Pease bring in pyjamas in a named carrier bag on Friday.***