

SUNBEAMS NURSERY

ST ALPHEGE CE INFANT SCHOOL

St Alphege
Values



Koinonia

Loved, Inspired, Shining

Newsletter

Term 2 Week 3 | 17.11.2023

CONTACTING THE SCHOOL

Executive Head: Liz Thomas-Friend
Head of School: Jacqui Spinks
School Business Manager: Manda Cullen
Chair of Governors: Paula Trewin
Address: St Alphege CE Infant School
Oxford Street, Whitstable, CT5 1DA
Phone: (01227) 272977
Website: www.st-alphege.kent.sch.uk
e-mail: headteacher@st-alphege.kent.sch.uk
Facebook: www.facebook.com/stalphege
Mrs Spinks School Mobile: 07535013075
Afterschool Club Mobile: 07947555370
Text number: 01227 250106

If online payment details are required, please contact the school office.

[Click here for our School & Nursery Term Dates](#)

DATES FOR YOUR DIARY

Nov 2023

Tues 21st – Individual School Photos
Weds 22nd – Year 1 Trip to Whitstable Museum
Weds 22nd – Year R Parents Phonic Session 9am
Mon 27th – Year R Parents Maths Session 1.30pm

Dec 2023

Fri 1st – Reception NCMP
Sat 2nd – Festive Fun day for 2024 Reception
Tues 5th – Year 1 Christmas Concert 9.30am
Weds 6th – Reception Parent Christmas Craft 9.30am
Weds 6th – Christmas Dinner
Weds 6th – Year 2 Nativity 2.15pm
Thurs 7th – Christmas Jumper Day
Thurs 7th – Year 2 Nativity 9.30am
Mon 11th – Flu vaccination (YR, 1 & 2)
Mon 11th – Year 1 Christmas Concert 2.15pm
Tues 12th – Year 2 Cinema Trip
Tues 12th – Reception Nativity 9.30am
Tues 12th – Whole School Worship at Church 2.30pm
Weds 13th – Sunbeams Nativity 9.30am
Weds 13th – Reception Nativity 2.15pm
Fri 15th – End of term 2

KEY EVENTS

Individual School Photos – Tuesday 21st November

Profiles Photography will be in school on Tuesday 21st November to take individual children's photos. We will also be able to take sibling photos this year for those children who have a sibling that attends our school or Sunbeams. If your Sunbeams child doesn't usually attend on a Tuesday morning, and you would like them to have their photo taken, please bring them via the school office at 8.30am.

Year 1 Trip to Whitstable Museum – Wednesday 22nd November

We are happy to tell you that, as part of our history topic 'What was it like when you were young?' we have organised a trip to the Whitstable Museum. The children will have an opportunity to look at some old toys, discuss a timeline and take part in an observation game, to develop their skills of historical enquiry.

The visit takes place on the morning of Wednesday 22nd November in the morning. Pearls class will visit at 9.15am and Oysters class will visit at 10.15am.

If you would like to join us as a parent helper, we would be delighted to have you. Please let us know if you would like to come along.



Children in Need – Herne Bay High School Dance Dash



Thank you to the amazing Herne Bay High School Dance Dash dancers for entertaining us this afternoon. We had so much fun dancing along. Thank you, parents, for your kind donations. Herne Bay High will add this to their grand total which will be donated to Children in Need.

Festive Fun Day

We would like to invite all children who are due to start school in Year R in September 2024, to a fun filled festive activity morning on Saturday 2nd December 2023 from 10.00am – 12.00pm. There is no need to book, just come along on the day. Please note that this is not for current St Alphege children. There will be plenty of other festive opportunities for them to enjoy in school.



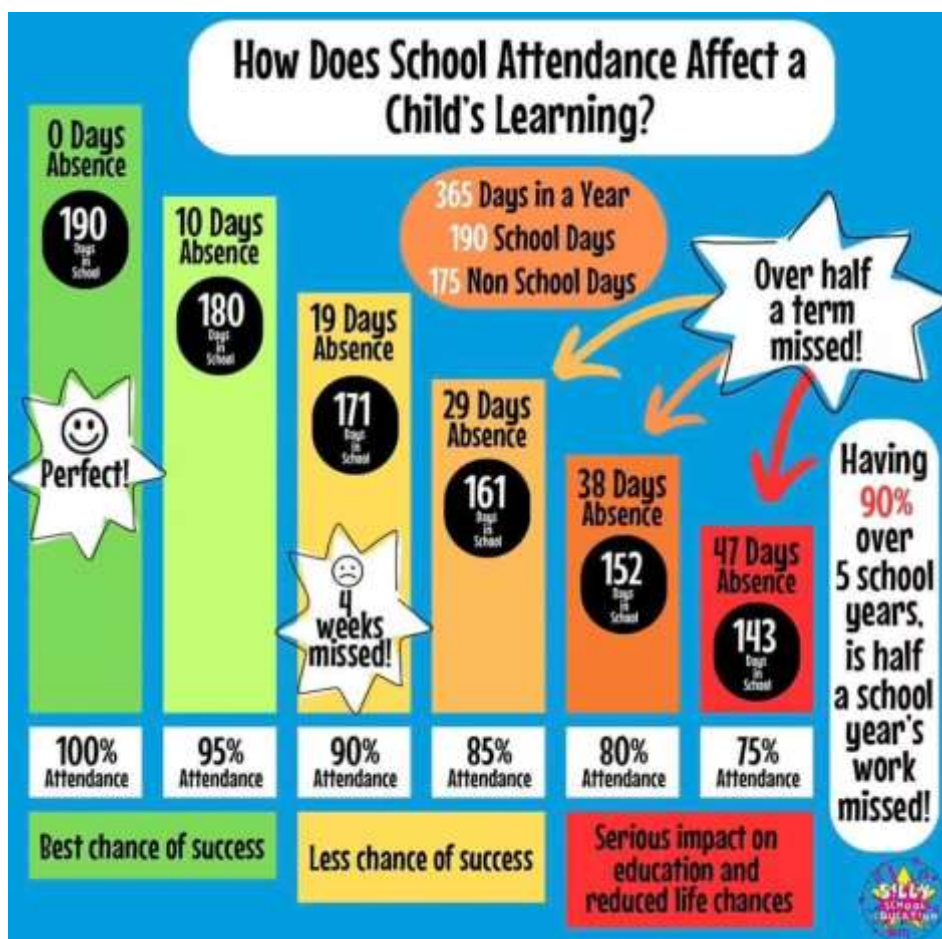
Christmas Tree Decorations Donations

We are looking for donations of Christmas tree decorations/baubles for our communal tree in the school hall. Any donations would be greatly appreciated.



Outstanding Attendance

We would like to thank you all for working with us to make sure your child attends school regularly. We thought this graphic may be a visual reminder about the importance of coming to school every day. As you may be aware, we are held accountable for our attendance figures by the Local Authority and value your support in making sure that your child does not miss out on their education. Our whole school attendance figures are currently strong and we value the part you have played in that. We fully appreciate that we are entering into the colder months, where coughs and colds tend to increase and of course, we would not want your child to come to school if they are not well. This is the most magical term in an Infant School and we do not want them to miss out on the sparkle and joy on the lead up to Christmas!



A new St Alphege Greeting

Some of you may have heard our new phone greetings when you have called the school office. These have been recorded by a few of our fabulous Year 2 children and we feel that they perfectly welcome people to our wonderful school. We are very proud of the children for how confidently they read out the messages and we hope you enjoy listening to them if you ever need to contact us.

Community



Our new and existing Maypole Art groups for siblings of children with complex medical need or SEND from Whitstable area.

Where: Mondays after school.

Timings: Age 5-7 timing 4pm-4.45pm Age 7-10 timing 5-05pm to 5.50pm

Where: The Hornetridge Arts and Community Centre, CTDMF

This session is designed for siblings to engage in art, in a fun and friendly environment also for children to socialise and make friendships and create peer support in an informal setting.

For more info on the art sessions and to sign your child up, please let us know you will be attending or for more information for the ongoing siblings' art sessions refer your child or children please email: philippa@themaypoleproject.co.uk

helpline@themaypoleproject.co.uk
01689 851 596

M THE MAYPOLE PROJECT

themaypoleproject.co.uk

Registered Charity No. 522863

The Maypole Project – New Art sessions for Siblings of children with complex medical or SEND



Whitstable Lifeboat Station Christmas Fair



There will be stalls with Christmas gift ideas and the shop will also be open, all in aid of RNLI Whitstable.



[Stagecoach Whitstable & Faversham](https://www.stagecoach.co.uk/whitstable)

<https://www.stagecoach.co.uk/whitstable>

Stagecoach now offers the option to pay via Childcare Voucher Schemes and via the new Tax-Free Childcare scheme.

King Alphege Attendance Lion

King Alphege Attendance Lion

King Alphege is awarded to the class with the highest percentage attendance each week



King Alphege Attendance Lion

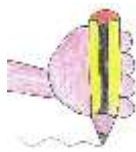
W/E 10.11.23

Pearls Class – 99.3%

Weekly Awards

Whole School Awards

Our awards this year represent our School Development priorities: WAVES. During our Celebration Worship on a Thursday, each class will nominate one child to celebrate their achievements.



Wonderful Writing
Emily – Puffins Class



Amazing Relationships
Zander and Prince
Oysters Class



Valiant Vocabulary
Alessia – Pearls Class



Excellent Reading
Shayla – Shells Class



Simcha (Shared Joy)
Ammar – Pebbles Class



St Alphege Values
Maia LH – Seagulls Class

Weekly Year Group Recap

Sunbeams

From Mrs Humphreys & Mrs Keeble

This week in Sunbeams we have been doing lots of different activities to help us develop our fine motor skills. We have been wrapping and threading wool around and through cardboard stars to decorate our school Christmas tree when it arrives, as well as threading beads and using tweezers to encourage our pincer movement. We have begun to learn the Christmas Story so that we will be able to write our own version of the Nativity for our performance to our parents at the end of this term. In music on Tuesday, we had great fun with Mrs Memmott's bungee cord, stretching it out and then releasing it at the appropriate time in the music. On Friday we thought about Children in Need and spent a lot of our day dancing along to our favourite pop music before watching the Herne Bay High Dance Dash in the afternoon.

Year R

From Mrs Arnott and Mr Mead

Reception have had a great week this week. In English we have been looking at the nursery rhyme Old McDonald. The children made their own animal puppets and on Monday performed their own versions of the song in front of the whole class! We thought about what animals we might find on a farm and did a sorting activity with different animals. On Thursday the children compiled and wrote their own lists of farm animals. We discussed when and why we might use lists. In maths we have been exploring the composition of 1, 2, 3. The children had fun completing different activities to show how 3 is made. This week we have been discovering all about the festival of Diwali. The children created some beautiful Diwali crafts including Diva lamps, Rangoli patterns and firework pictures. We had lots of fun on Friday celebrating Children in Need. We spoke about what charity is and enjoyed lots of Pudsey activities. The Dance Dash in the afternoon was so much fun! Well done Reception, have a lovely weekend!

Year 1

From Miss Hughes & Mrs O'Malley

We have had a wonderful week of learning in Oysters and Pearls.
This week, we visited the RNLI Lifeboat Station at Whitstable Harbour to learn about all the wonderful work they do to help protect our beach and sea users. We were shown the lifeboat itself and all the kit that it uses, and one of the volunteers, Robin, showed us how the crew have to dress in their kit and get out to sea in less than 5 minutes! The RNLI is a charity that relies on public donations and bequests to keep going and provides a fantastic service. Huge thanks to David, Sue and Robin for welcoming us, and special thanks to all of our wonderful family volunteers who accompanied us.
Next week, as part of our history learning, we will visit Whitstable Museum with the learning question 'What was it like when you were young?' we will look at old toys, Victorian-style clothes, and much more. Volunteers welcome, please see your child's class teacher.
In maths, we are learning how to correctly use a number line. This week we focused on addition and next week we move on to subtraction.
Next week, we begin our DT project in which we will plan, design and make a small toy with a moving part – watch this space...
Wishing everyone a happy and restful weekend.

Year 2

From Mrs Swindells & Mrs O'Keeffe

We have had an exciting week in Year 2! We absolutely loved mixing colours to create secondary and tertiary colours in art and are looking forward to creating different tones and shades by gradually adding white or black to base colours. In English we used all of our vocabulary collected over the past two weeks to create an abstract poem describing the setting in 'Greta and the Giants' using a variety of adjectives and verbs. Next week, we will be making up a character to immerse ourselves into the setting and use our abstract poem to write a simple narrative. We have wowed our teachers with our subtraction skills this week and have shown incredible determination and resilience when subtracting 2-digit numbers from 2-digit numbers. Next week our maths learning will focus on money and we will be recognising the value of coins, adding coins together and making totals using different combinations of coins. On Monday next week, our day will be focussed on our learning question for the term 'How can we help the world?' and we will be looking into different types of pollution, completing experiments based on these and discussing the effect they are having on our world. **We will need lots of junk modelling for this day so please bring any recyclable materials into school!**
Have a lovely weekend!