




# Herne Bay & Whitstable

# Timetable

6th June - 20th July 2022

 **Poppy** - 03000 422889  
Parklife, Memorial Park, Kings Road, Herne Bay, CT6 5RG

 **Joy Lane** - 03000 417555  
Joy Lane Primary School, Joy Lane, Whitstable, CT5 4LT

 **Briary** - 03000 420897  
Greenhill Road (West), Herne Bay, CT6 7RS

 **Swalecliffe** - 03000 411039  
Swalecliffe Primary School, Bridgefield Road, Swalecliffe, Whitstable, CT5 2PH



**Monday**

**Joy Lane**

Bumps to Walkers  
9:30am - 11:00am

**Poppy**

Stay and Play  
10:00am - 11:30am

Starts:  
11th  
July

**Joy Lane**

School Readiness  
1:00pm - 2:30pm

Starts:  
13th  
June

**Poppy**

School Readiness  
1:00pm - 2:30pm

**Tuesday**

**Joy Lane**

Stay and Play  
10:00am - 11:30am

**Poppy**

Healthy Walk  
10:00am Start

**Email Services**

- Healthy Babies
- School Readiness
- Bonding with Bump
- Healthy Tots

For more information or to book on please email

JoyLaneChildrensCentre@Kent.gov.uk

**Look out for the bookable bee!**

Please turn over for more information

**Wednesday**

**Briary**

Stay and Play  
12:30pm - 2:00pm

Starts:  
13th  
July

**Joy Lane**

Baby Massage  
1:00pm - 2:00pm

**Thursday**

**Swalecliffe**

Stay and Play  
9:30am - 11:00am

**Briary**

Bumps to Walkers  
9:30am - 11:00am

Starts:  
16th  
June

**Poppy**

Baby Massage  
10:00am - 11:00am

**Swalecliffe**

Bumps to Walkers  
12:30pm - 2:00pm

**Poppy**

YAPs  
12:30pm - 2:30pm

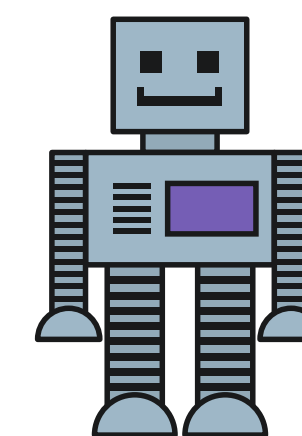
**Friday**

**Poppy**

Bumps to Walkers  
9:30am - 11:00am

**Swalecliffe**

Healthy Walk  
10:00am Start



**Register with Kent Children's Centres**

<https://www.kent.gov.uk/education-and-children/childcare-and-pre-school/childrens-centres>

**Email Us:**

 PoppyChildrensCentre@kent.gov.uk

 BriaryChildrensCentre@kent.gov.uk

 JoyLaneChildrensCentre@kent.gov.uk

 SwalecliffeCC@kent.gov.uk



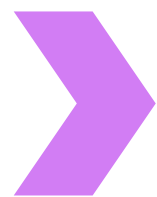





# Information



## Opening Times:

	<b>Poppy</b> Monday - Thursday 8.30am - 4.30pm Friday 8.30am - 4.00pm		<b>Joy Lane</b> Monday - Thursday 8.30am - 4.30pm Friday 8.30am - 4.00pm		<b>Briary</b> Wednesday 8.30am - 4.30pm Thursday 8.30am - 4.30pm		<b>Swalecliffe</b> Wednesday 8.30am - 3.00pm Thursday 8.30am - 3.00pm
---	---	---	--	---	--	---	---

### Stay and Play

Come and join us for a range of activities such as arts and crafts, messy play, role play, dress up and a whole lot more! Plus the opportunity to make new friends.

### Bumps to Walkers

For expectant parents and carers until your child is walking. A chance to socialise with others, gaining information, support and advice.

### Healthy Walk

Come along and join us for a healthy walk. This is an opportunity to meet other parents and carers.  
**Walks last approximately 1 hour.**

### Free for 2

Some 2 year olds can get up to 15 hours of free childcare per week! For more information and how to apply:



### Useful Contact Numbers:

**Health Visitor**  
0300 7900 156  
**Midwife**  
01227 864152

### YAPs

A support group for parents and parents-to-be up to the age of 19 years. Creative and fun sessions with information, advice and an opportunity to make new friends.

### Baby Massage

Baby Massage enables you to learn about and respond to your baby's body language. It is also a wonderful way to make your baby feel safe and secure.



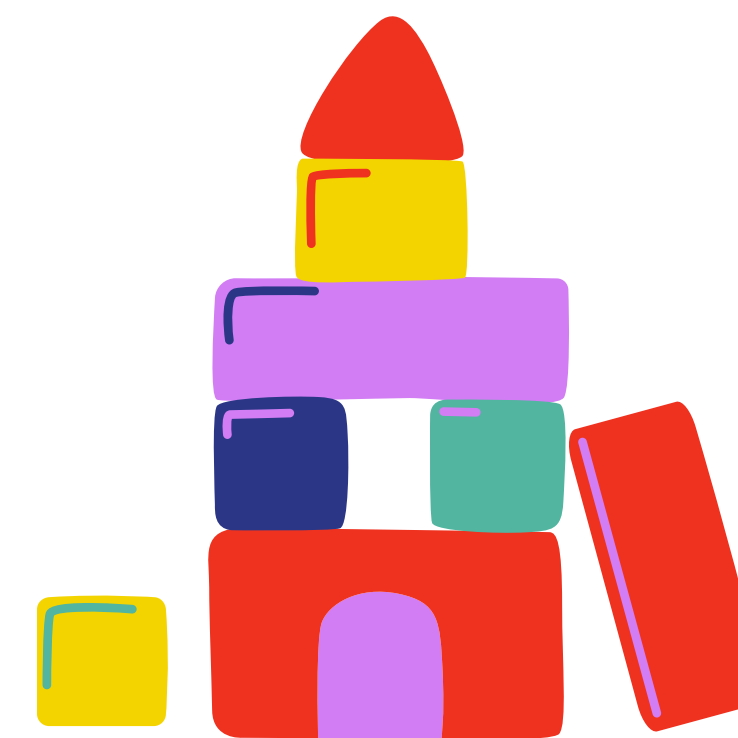
**Booking Required**

### School Readiness

A 2 week course covering what it means to be school ready and how you can support your child with this transition.



**Booking Required**



### Healthy Start Vitamins

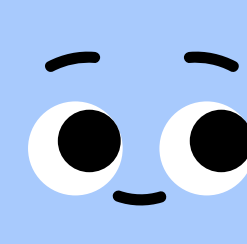
Are you eligible for Healthy Start Vitamins, if so complete this form to order Healthy Start Vitamins to your door:



@CanterburyChildrens Centres



@Canterbury\_Childrens\_Centres



Please take a look at our better bedtimes workshops on Facebook.

